

Contact protection relay Type VR 3 tr

Contact protection relays are used for amplifying of switching signals. They are usually in use in industrial sectors.

Our contact protection relays are used e.g. with following applications:

- Contact-Thermometer
- Contact dial thermometer
- Contact-gauge
- Contact- hygrometer

The supply of signal voltage is galvanically isolated and conducted touch-proof.

The contact protection relays Type VR are populated with change-over contact and are designed for working in opened and closed current either, or e.g. for heating and cooling.

Typical criteria of the contact protection relays are:

- small dimensions (110x68x58 mm) but breaking capacity up to 16A
- Relay with change-over contact
- Long life but high breaking capacity
- The relays are provided with a short time delay for avoiding chatter
- Spezial executions for switch-on delay are possible
- Two types are available, according to the sensibility of contact giver

While chosing a relay always emanate from the contact gives sensibility!

Type VR 3 tr U

Especially fit for glass contact-thermometer and kontakt-hygrometer

Supply voltage: 230V 50Hz
Output relay: 1 switch 230V/16A (ohmsche Last)
230V/3A (cos. Phi 0,7)
Contact giver charge: 0,5mA / 0,7V
Switch delay: ca. 300ms

Type VR 3 tr U Z

Especially fit for contact-dial thermometers and contact-gauges

Supply voltage: 230V 50Hz
Output relay: 1 switch 230V/16A (ohmsche Last)
230V/3A (Cos. Phi 0,7)
Contact giver charge: 20my / 24V
Switch delay: ca. 1s

Type VR 3 tr do (Auslauftyp)

The same function like VR 3 tr U, but with two isolated circuits and two change-over contacts.

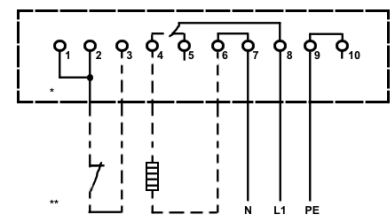
Contact protection semiconductor relay Type TYR

Especially fit for glass contact-thermometer. The TYR has in case of its high switching frequency a high quality of control, but also long living.



Contact protection relay
VR 3 tr

- 1+2+3 e.g. thermometer 3-pol.
- 2+3 e.g. thermometer
- 4+6 Heating
- 5+6 Cooling
- 6+7 N-Connection
- 8 L1 Supply control and relay
- 9+10 PE connection



230V 50Hz
I max. 16A (AC1)
I max. 3A (Cos. Phi 0,7)

* = serially linked
** = example

